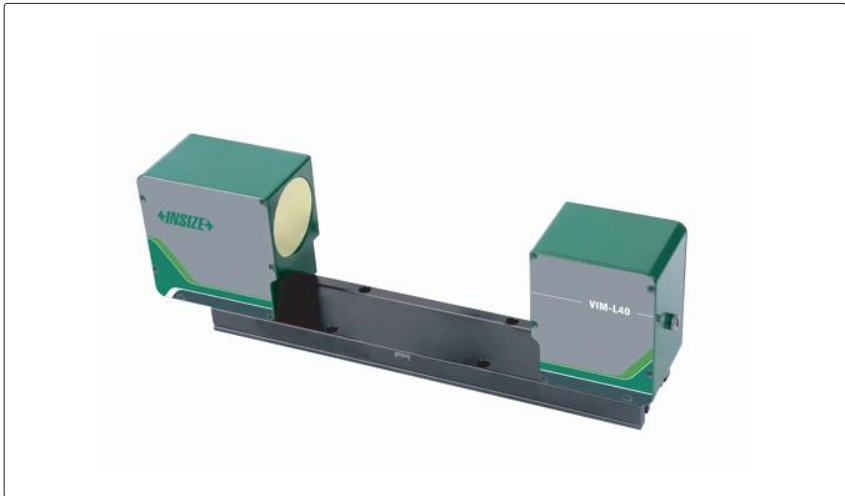
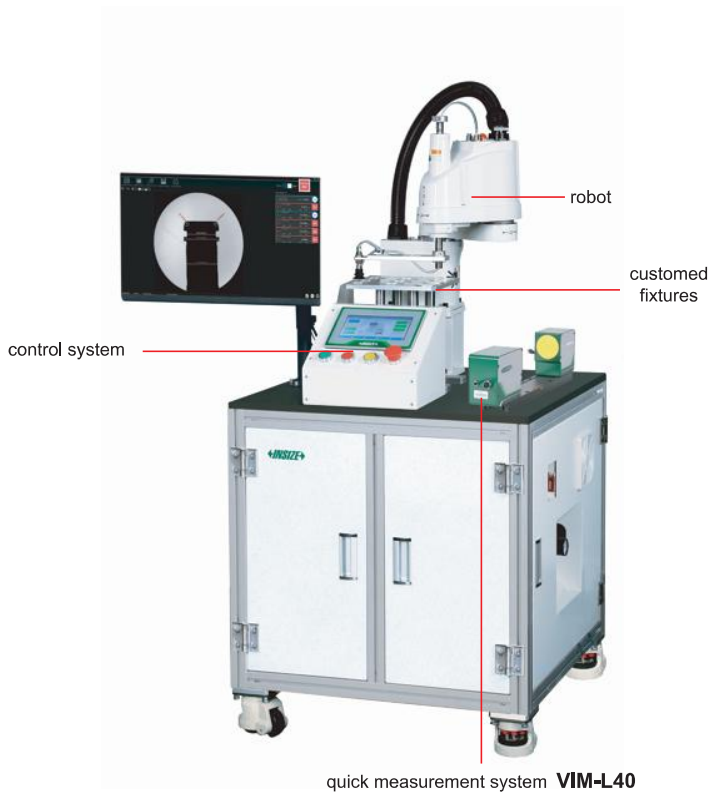


AUTOMATIC QUICK MEASUREMENT SYSTEM

CODE RBT-VIM40

CUSTOM-MADE



OPERATION PROCESS

- Step 1: Place the workpiece manually on the recess in the loading area
- Step 2: Press the reset button to return the robot to the initial position
- Step 3: Press the start button, the system prompts whether the workpiece is correctly placed and click OK
- Step 4: The robot picks up the workpiece and places it in the quick measurement system test position
- Step 5: The quick measurement system measurement and outputs the results
- Step 6: The robot removes the workpiece
- Step 7: The robot places the workpiece in the OK or NG station according to the measurement results

- Lightweight SCARA robot for high-speed and precision
- Quick measurement system automatically measures the dimensions of the workpiece and provides real-time feedback to the control system
- Control system Tcp/IP via bus communication, high speed, high efficiency and easy to extend

SPECIFICATION

Robot	robot arm spreading	400mm
	Max working speed	7225mm/s
	Max weight of workpiece	3kg
	repeat positioning accuracy	±0.02mm
	number of control axis	4
	communication protocols	Ethernet Tcp/IP
Quick* measurement system	measurement range	Ø40mm
	depth of field	20mm
	measurement accuracy	±3µm
	repeatability	1µm
	shell material	aluminium
Power supply	220V, 50Hz	
Supply pressure	0.5~0.6MPa	
Environmental requirement	temperature: 0~45°C, relative humidity: less than 85%	
Net weight	113kg	

* Different models can be selected according to the workpiece

STANDARD DELIVERY

Robotic system	robot body
	robot control cabinet
	programming guide
Quick measurement system	main unit
	computer
	software and dongle
	monitor
Control touch screen	1set
Control box	1set

QUICK MEASUREMENT SYSTEM SOFTWARE (INCLUDED)

